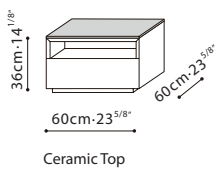


## SPECS

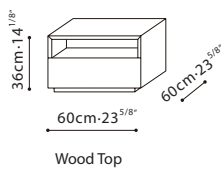


**BLEND / FRAME:** The frame is constructed with Grey Oak veneer. **TOP:** For models C06G0401, C06G0406, and C06G0407, the table top is made of Ceramic and available in two colors: White and Grey. Models C06C0402, C06C0404, and C06C0405 are constructed with all wood and finished in Grey Oak stain. **DRAWER:** Built-in drawer structure is made of Grey Oak melamine and comes with full extension invisible drawer runners with dampers.

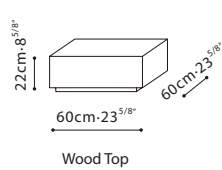
C06G0401



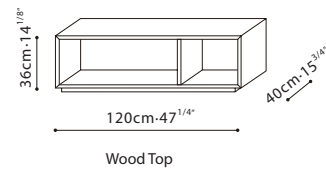
C06G0402



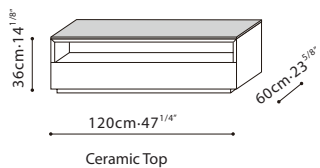
C06G0404



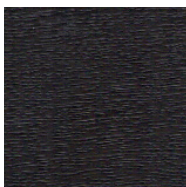
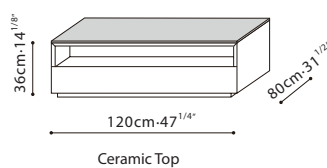
C06G0405



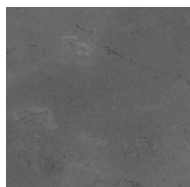
C06G0406



C06G0407



Grey Oak



Grey Ceramic

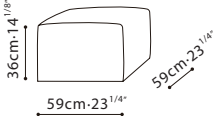


White Ceramic



**BLEND OTTOMAN/ FRAME:** Constructed with a solid Birch wood frame, reinforced with plywood, covered in polyurethane foam and fabric lining. **BASE:** Comes equipped with four castors affixed at the bottom. **UPHOLSTERY:** Available in Fabric (removable via Velcro) or Leather (non-removable).

C02G0403



Available in Fabric/Leather

