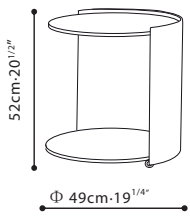


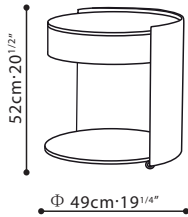


**HARMON /** TOP: Available in Brown Walnut, Black Walnut, Carrara Marble, or Mystique Brown Marble. DRAWER: Harmon C06B0502 comes with built-in walnut veneered drawer. FRAME: Aluminum frame upholstered in select FU Grade Leathers: FU-01 Off White, FU-02 Black, FU-03 Taupe, or FU-04 Orange. BASE/SHELF: Base is constructed with veneered wood. If top is Carrara Marble or Brown Walnut, base will be Brown Walnut. If top is Mystique Brown Marble or Black Walnut, base will be Black Walnut. Five castors are affixed on the bottom for easy maneuvering.

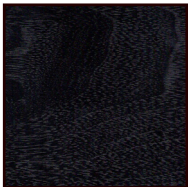
C06B0501



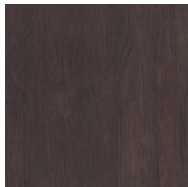
C06B0502



TOP, DRAWER & BASE:



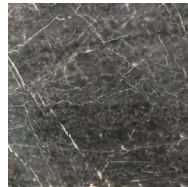
Black Walnut



Brown Walnut



Carrera Marble



Mystique Brown Marble

TOP:

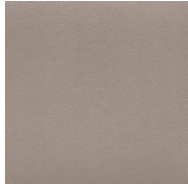
FRAME:



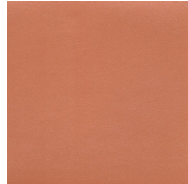
FU-01 Off White



FU-02 Black



FU-03 Taupe



FU-04 Orange

\*Natural marble pattern may vary.